

# ROYAL ROADS Victoria, B.C.

Scale 1:10 000

Contours: 5m

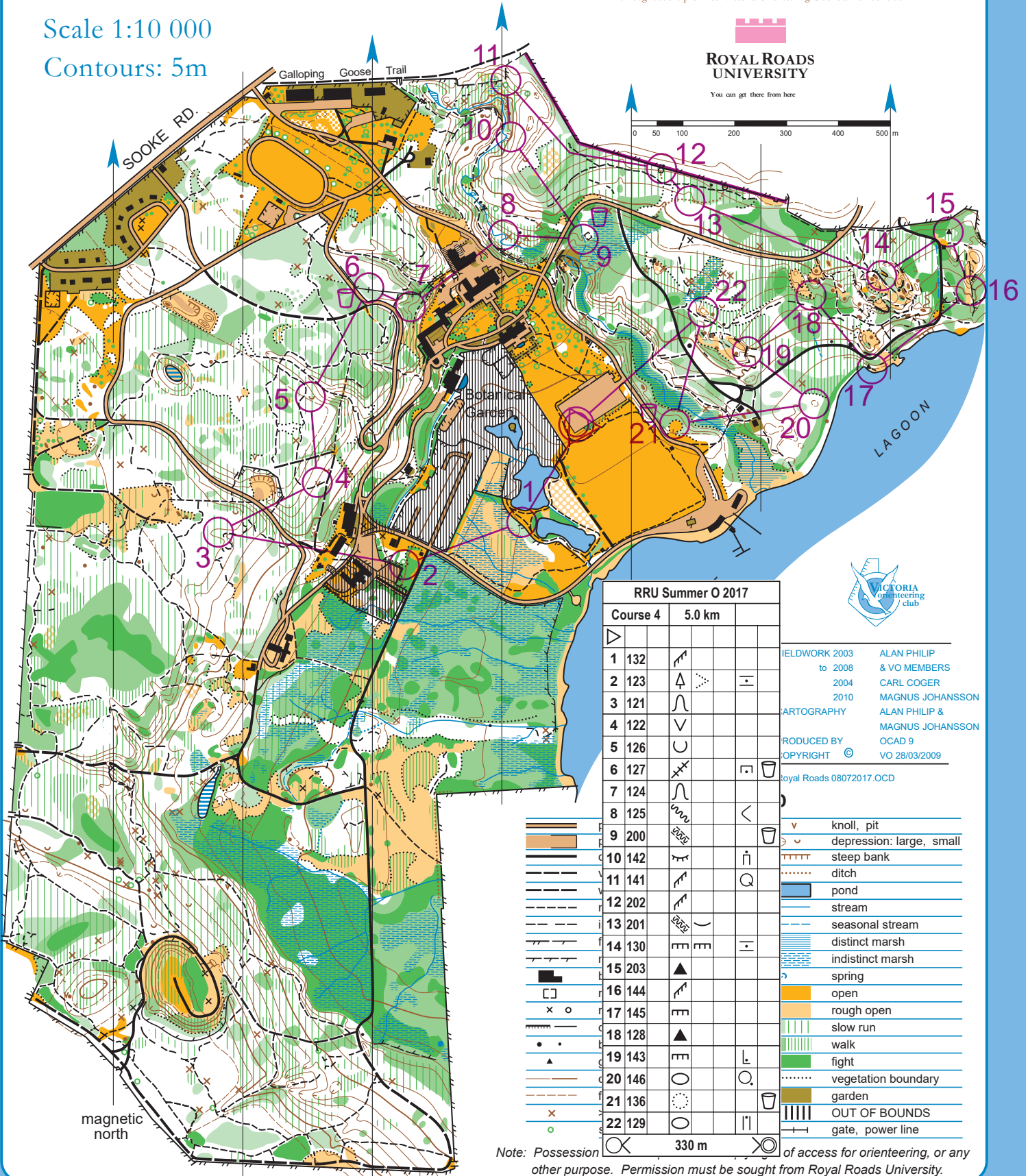
## ORIENTEERING AND RECREATION MAP

Orienteering is a sport that involves navigating through unfamiliar terrain using a map and compass. This map is one of many that the Orienteering Association of B.C. uses to stage events throughout the province. Victoria Orienteering Club is a member club.

  
**ROYAL ROADS  
UNIVERSITY**

You can get there from here

0 50 100 200 300 400 500 m



### RRU Summer O 2017

#### Course 4 5.0 km

Control No.	Code	Symbol	Symbol	Symbol
1	132	▲		
2	123	▲	□	□
3	121	▲		
4	122	▲		
5	126	▲		
6	127	▲	□	□
7	124	▲		
8	125	▲	□	□
9	200	▲	□	□
10	142	▲	□	□
11	141	▲	□	□
12	202	▲		
13	201	▲		
14	130	▲	□	□
15	203	▲		
16	144	▲		
17	145	▲		
18	128	▲		
19	143	▲	□	□
20	146	▲	□	□
21	136	▲	□	□
22	129	▲	□	□

FIELDWORK 2003 to 2008 & VO MEMBERS  
2004 CARL COGER  
2010 MAGNUS JOHANSSON  
ARTOGRAPHY ALAN PHILIP & MAGNUS JOHANSSON  
PRODUCED BY OCAD 9  
COPYRIGHT © VO 28/03/2009  
Royal Roads 08072017.OCD

- knoll, pit
- depression: large, small
- steep bank
- ditch
- pond
- stream
- seasonal stream
- distinct marsh
- indistinct marsh
- spring
- open
- rough open
- slow run
- walk
- fight
- vegetation boundary
- garden
- OUT OF BOUNDS
- gate, power line

Note: Possession of access for orienteering, or any other purpose. Permission must be sought from Royal Roads University.



magnetic north