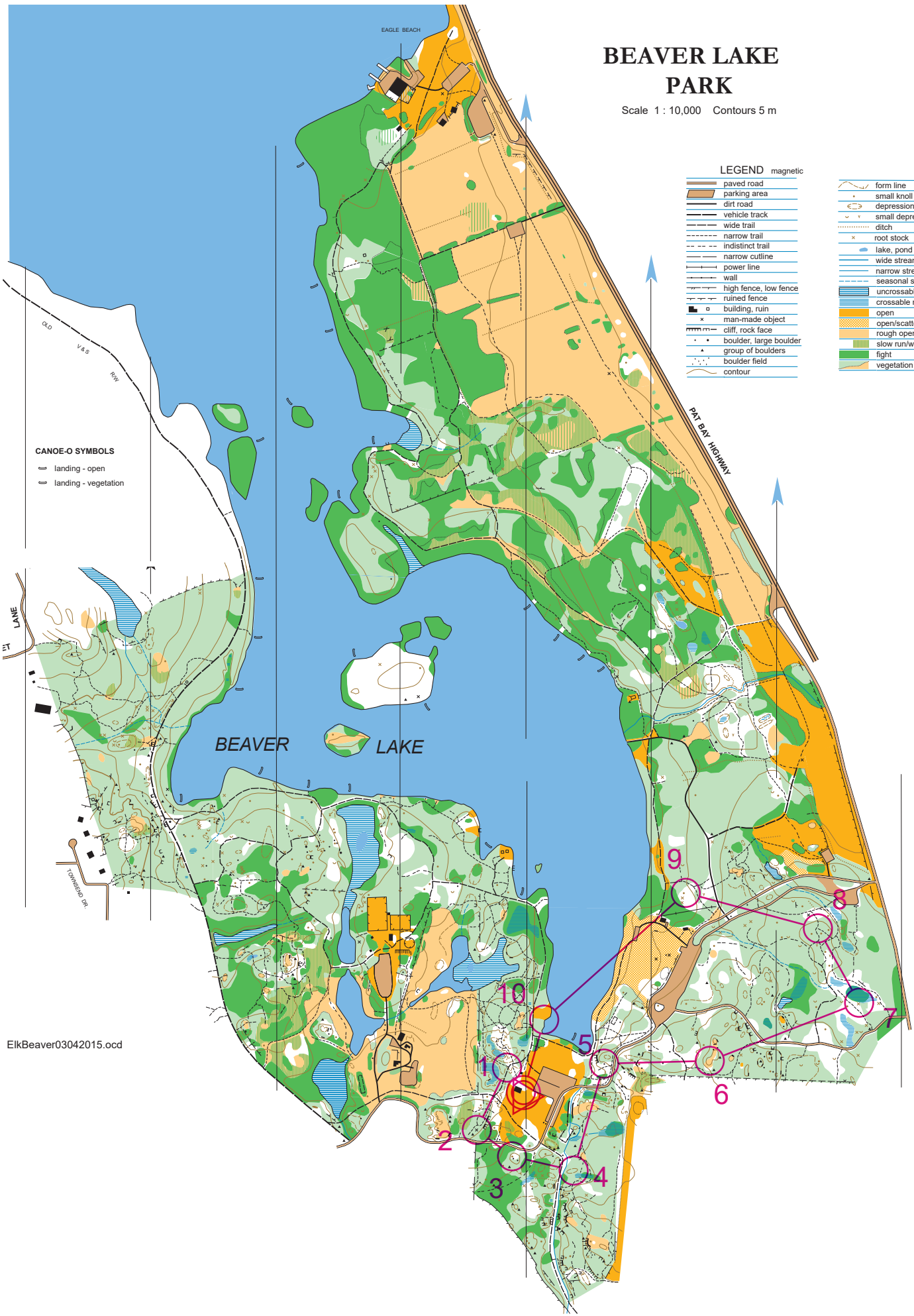


# BEAVER LAKE PARK

Scale 1 : 10,000 Contours 5 m



**LEGEND** magnetic

|  |                        |  |                       |
|--|------------------------|--|-----------------------|
|  | paved road             |  | form line             |
|  | parking area           |  | small knoll           |
|  | dirt road              |  | depression            |
|  | vehicle track          |  | small depression, pit |
|  | wide trail             |  | ditch                 |
|  | narrow trail           |  | root stock            |
|  | indistinct trail       |  | lake, pond            |
|  | narrow cutline         |  | wide stream           |
|  | power line             |  | narrow stream         |
|  | wall                   |  | seasonal stream       |
|  | high fence, low fence  |  | uncrossable marsh     |
|  | ruined fence           |  | crossable marsh       |
|  | building, ruin         |  | open                  |
|  | man-made object        |  | open/scattered trees  |
|  | cliff, rock face       |  | rough open            |
|  | boulder, large boulder |  | slow run/walk         |
|  | group of boulders      |  | flight                |
|  | boulder field          |  | vegetation boundary   |
|  | contour                |  |                       |

**CANOE-O SYMBOLS**

- ☐ landing - open
- ☐ landing - vegetation